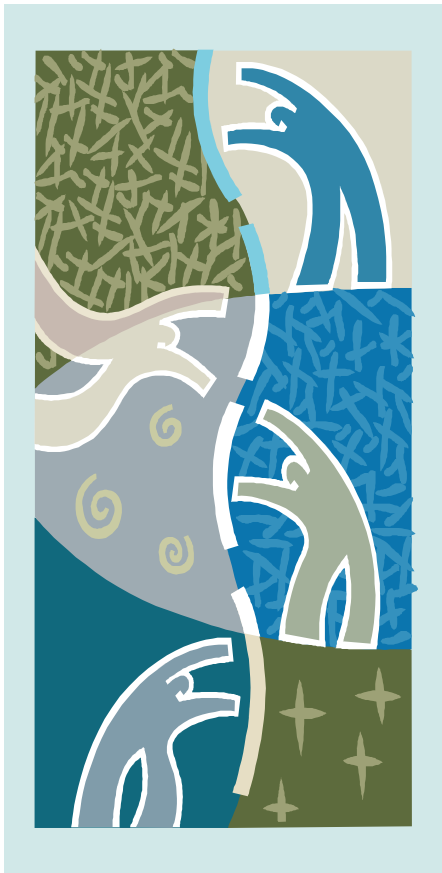


Social Work Services



Patient Information



South-East
Regional Health Authority
Régie régionale de la santé
Sud-Est

Social Work Services

Social Workers

We understand that coming to the Hospital can be stressful, and medical issues have an impact on other areas of your life. We are here to help you look at possible solutions to many problems from daily issues to life's most challenging situations.



As part of the health care team, Social Workers are professionally trained to help patients and their families adjust/understand and cope with medical, social, emotional and practical concerns related to their illness/ hospitalization and treatment.

When should I access a Social Worker?

You may want to talk to someone about:

- * You and your family's adjustment to illness and treatment
- * How to deal more effectively with stress
- * Feelings of grief and loss
- * Issues related to death
- * Family conflict which affects your ability to cope
- * Financial and practical difficulties
- * Concerns about communication with the health care team and understanding the hospital environment
- * Difficulties in dealing with the hospital system
- * Other



How can a Social Worker help me?

Some ways they help are:

- * Supporting people during periods of crisis
- * Counseling
- * Locating community resources
- * Assisting communication with health care providers
- * Representing patients and families within the hospital, and to outside agencies and referring as necessary
- * Other

Confidentiality

Communications are private and confidential.

This means that in most instances your Health Care Social Worker is not permitted to disclose information obtained from you to anyone other than your health care team without your consent.

If you have any questions about confidentiality and its limitations, our department will be glad to discuss this further.



How do I contact a Social Worker?

Social Workers can be accessed through members of your treatment team or by contacting:

Social Work Services
The Moncton Hospital (SERHA)
135 MacBeath Ave.
Moncton, NB, E1C 6Z9
Ph: (506) 857-5331
Fax: (506) 857-5775

Social Workers are registered through The New Brunswick Association of Social Workers.

Where to find us...

Most units at The Moncton Hospital have an assigned Social Worker whose office is usually located nearby. Social Workers are also available at the Sackville Memorial Hospital, Addiction Services, Community Mental Health and Extra-Mural Services. The main Social Work office is located on the ground level at The Moncton Hospital.

Our office is usually open from 8:30 am – 4:30 pm, Monday-Friday.